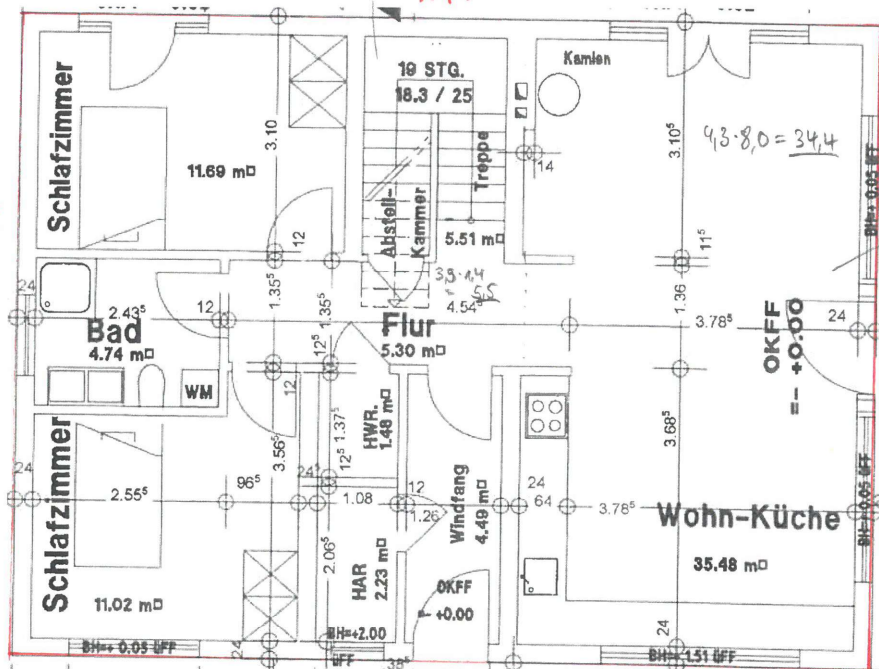


$$1,3 \cdot 3,0 = 3,9$$

E6 1:100 ✓

-11,4-

-8,5-



$$\Sigma A = 34,4 + 5,5 + 5,7 = 45,6 \text{ m}^2$$

☒ offene Punkte:

○ Dichtheitsprüfung?

○ PV-Fläche max? 26 m^2

